

A46 Newark Bypass

TR010065/APP/6.2

6.2 Environmental Statement

Figure 11.5 Noise levels in the Do Minimum Opening Year

APFP Regulation 5(2)(a)

Planning Act 2008

Infrastructure Planning (Applications: Prescribed Forms and
Procedure) Regulations 2009

Volume 6

April 2024

Infrastructure Planning

Planning Act 2008

**The Infrastructure Planning
(Applications: Prescribed Forms
and Procedure) Regulations 2009**

A46 Newark Bypass

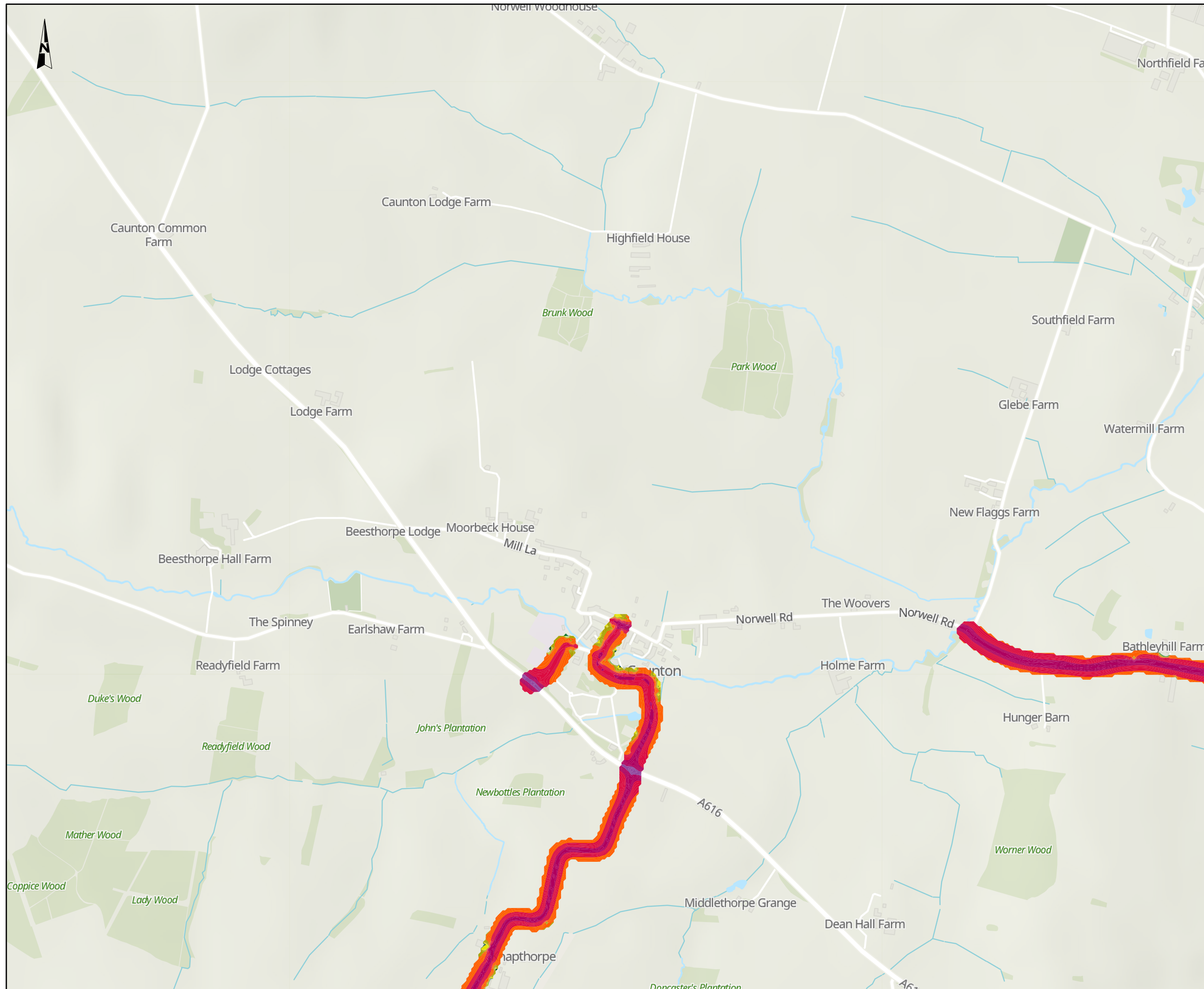
Development Consent Order 202[x]

ENVIRONMENTAL STATEMENT

Figure 11.5 Noise levels in the Do Minimum Opening Year

Regulation Number:	Regulation 5(2)(a)
Planning Inspectorate Scheme Reference	TR010065
Application Document Reference	TR010065/APP/6.2
Author:	A46 Newark Bypass Project Team, National Highways

Version	Date	Status of Version
Rev 1	April 2024	DCO Application

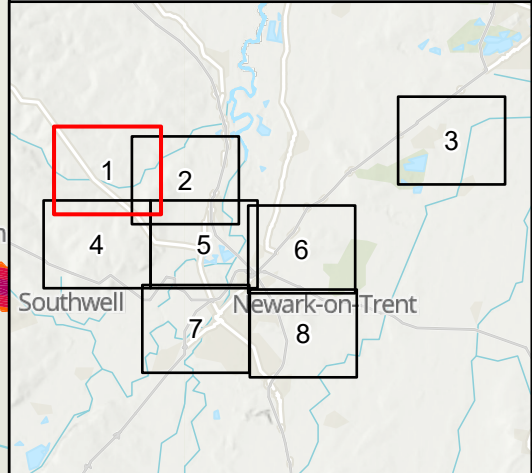


NOTES
 Source
 Noise data designed by Mott MacDonald, 2023.
 Service Layer Credits
 Contains OS data © Crown Copyright and database right 2020
 Contains data from OS Zoomstack, Contains OS data © Crown Copyright and database right 2023
 Contains data from OS Zoomstack

KEY TO SYMBOLS

Noise levels $L=L_{A10,18h}$ (dB) - Do Minimum Opening Year

Light Green	$L < 35$
Green	$35 \leq L < 40$
Dark Green	$40 \leq L < 45$
Yellow	$45 \leq L < 50$
Olive	$50 \leq L < 55$
Orange	$55 \leq L < 60$
Red	$60 \leq L < 65$
Magenta	$65 \leq L < 70$
Purple	$70 \leq L < 75$
Dark Purple	$75 \leq L < 80$
Dark Blue	$L \geq 80$



C01	08/12/23	DCO APPLICATION	BH	SD	HF
REV.	DATE	AMENDMENT DETAILS	ORIG	CHK'D	APP'D

CLIENT
 national highways

PURPOSE OF ISSUE
 DCO APPLICATION

DEVELOPMENT CONSENT ORDER NUMBER
 TR010065

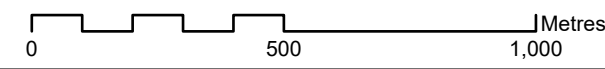
PROJECT TITLE
 A46 NEWARK BYPASS

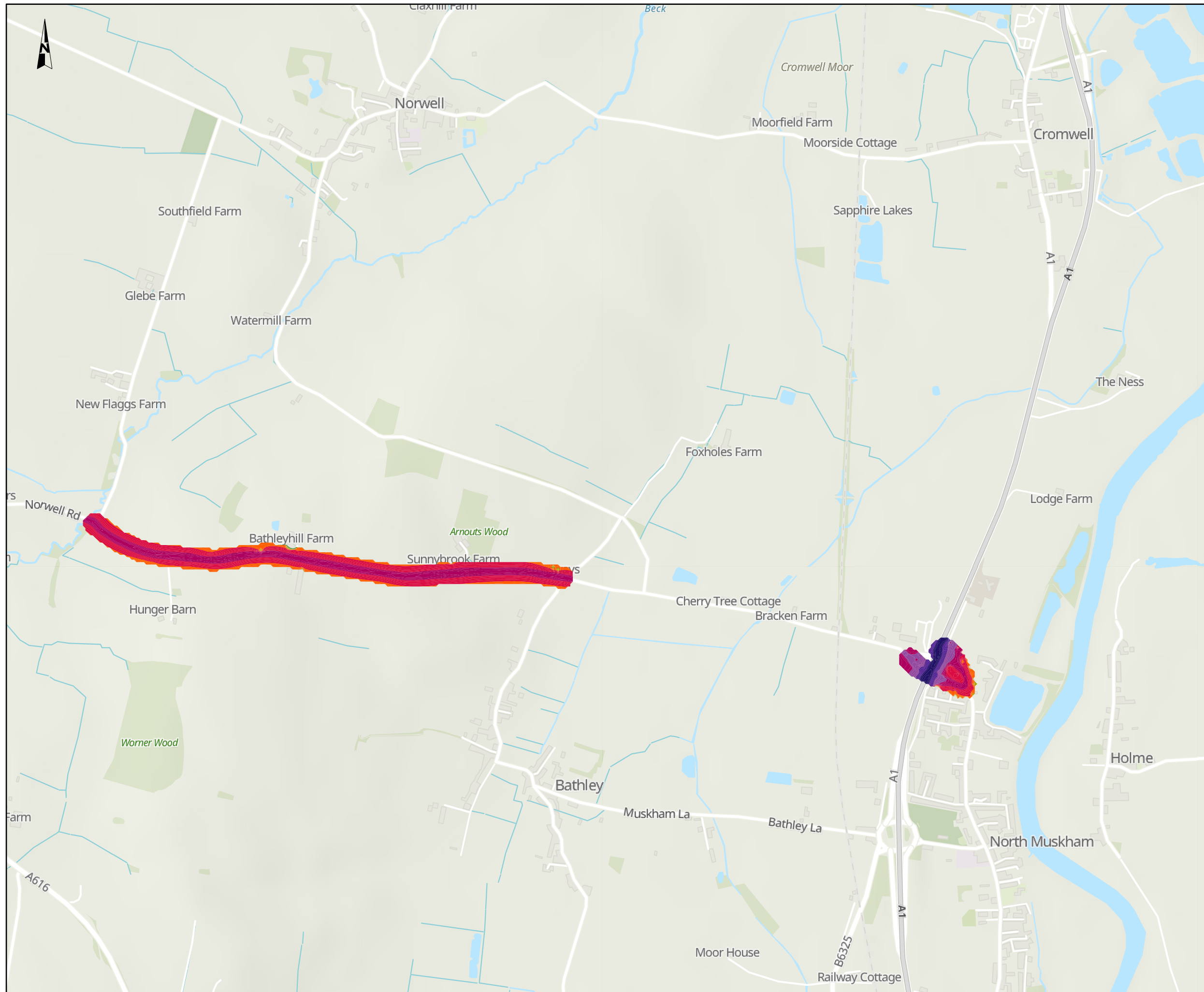
DRAWING TITLE
 Figure 11.5
 Noise levels in the Do Minimum Opening Year
 Sheet: 1 of 8

ORIGINAL SIZE A3 SCALE 1:15,000

DRAWING NUMBER HE551478	ORIGINATOR SKAG	VOLUME ENV	PROJECT REF NO. HE551478
LOCATION CONWI_CONW	TYPE DR	ROLE LA	REVISION C01
	NUMBER 00012		

© Skanska
 This document is issued for the party which commissioned it and for specific purposes connected with the captioned project only. It should not be relied upon by any other party or used for any other purpose.
 We accept no responsibility for the consequences of this document being relied upon by any other party, or being used for any other purpose, or containing any error or omission which is due to an error or omission in data supplied to us by other parties.



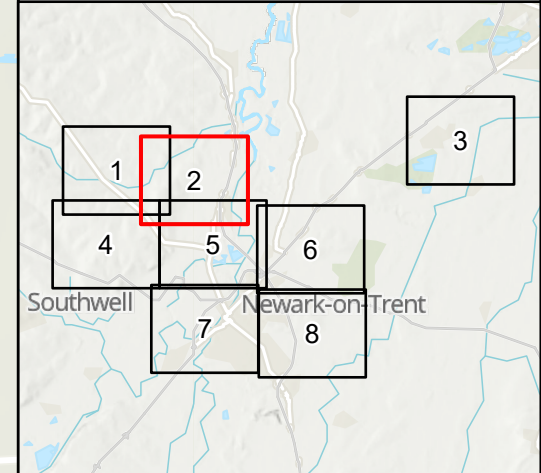


NOTES
 Source
 Noise data designed by Mott MacDonald, 2023.
 Service Layer Credits
 Contains OS data © Crown Copyright and database right 2020
 Contains data from OS Zoomstack, Contains OS data © Crown Copyright and database right 2023
 Contains data from OS Zoomstack

KEY TO SYMBOLS

Noise levels $L=L_{A10,18h}$ (dB) - Do Minimum Opening Year

- $L < 35$
- $35 \leq L < 40$
- $40 \leq L < 45$
- $45 \leq L < 50$
- $50 \leq L < 55$
- $55 \leq L < 60$
- $60 \leq L < 65$
- $65 \leq L < 70$
- $70 \leq L < 75$
- $75 \leq L < 80$
- $L \geq 80$



C01	08/12/23	DCO APPLICATION	BH	SD	HF
REV.	DATE	AMENDMENT DETAILS	ORIG	CHK'D	APP'D

CLIENT
 national highways

PURPOSE OF ISSUE
 DCO APPLICATION

DEVELOPMENT CONSENT ORDER NUMBER
 TR010065

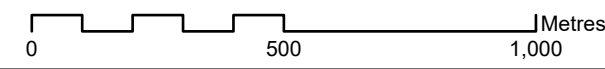
PROJECT TITLE
 A46 NEWARK BYPASS

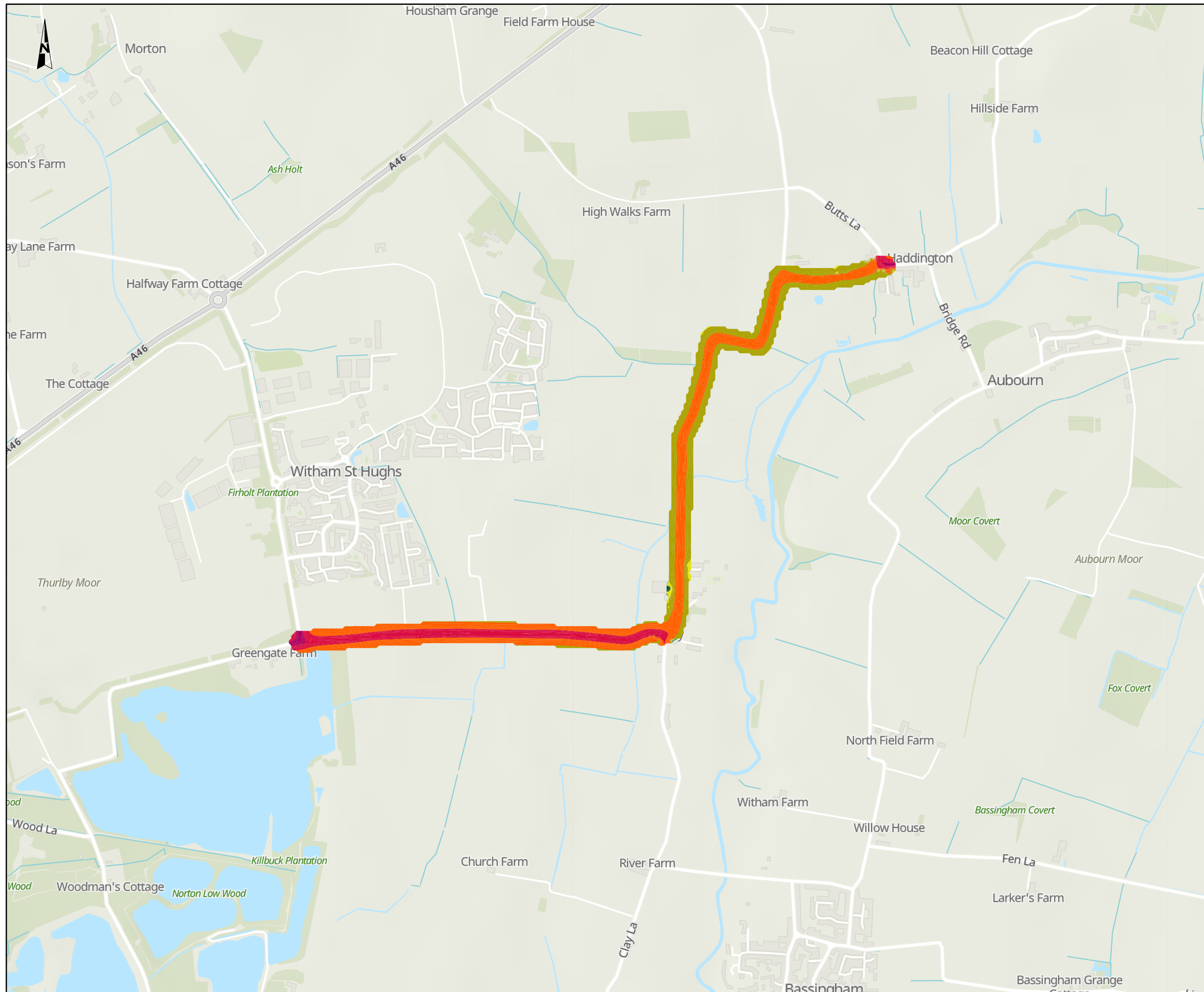
DRAWING TITLE
 Figure 11.5
 Noise levels in the Do Minimum Opening Year
 Sheet: 2 of 8

ORIGINAL SIZE A3 SCALE 1:15,000

DRAWING NUMBER HE551478	ORIGINATOR SKAG	VOLUME ENV	PROJECT REF NO. HE551478
LOCATION CONWI_CONW	TYPE DR	ROLE LA	REVISION C01
	NUMBER 00013		

© Skanska
 This document is issued for the party which commissioned it and for specific purposes connected with the captioned project only. It should not be relied upon by any other party or used for any other purpose.
 We accept no responsibility for the consequences of this document being relied upon by any other party, or being used for any other purpose, or containing any error or omission which is due to an error or omission in data supplied to us by other parties.



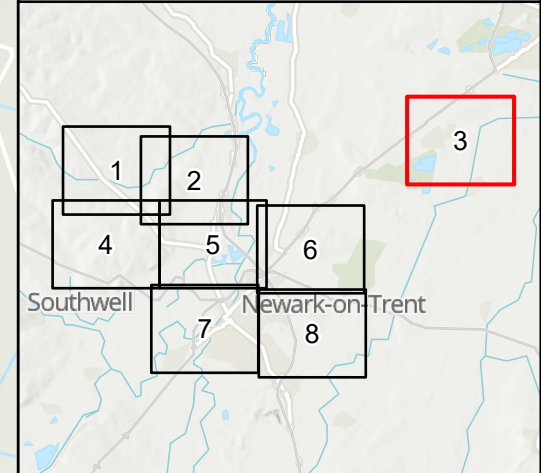


NOTES
 Source
 Noise data designed by Mott MacDonald, 2023.
 Service Layer Credits
 Contains OS data © Crown Copyright and database right 2020
 Contains data from OS Zoomstack, Contains OS data © Crown Copyright and database right 2023
 Contains data from OS Zoomstack

KEY TO SYMBOLS

Noise levels $L=L_{A10,18h}$ (dB) - Do Minimum Opening Year

Light Green	$L < 35$
Green	$35 \leq L < 40$
Dark Green	$40 \leq L < 45$
Yellow	$45 \leq L < 50$
Light Orange	$50 \leq L < 55$
Orange	$55 \leq L < 60$
Red	$60 \leq L < 65$
Dark Red	$65 \leq L < 70$
Purple	$70 \leq L < 75$
Dark Purple	$75 \leq L < 80$
Dark Blue	$L \geq 80$



CO1	08/12/23	DCO APPLICATION	BH	SD	HF
REV.	DATE	AMENDMENT DETAILS	ORIG	CHK'D	APP'D

CLIENT
 national highways

PURPOSE OF ISSUE
 DCO APPLICATION

DEVELOPMENT CONSENT ORDER NUMBER
 TR010065

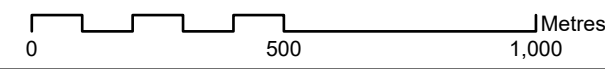
PROJECT TITLE
 A46 NEWARK BYPASS

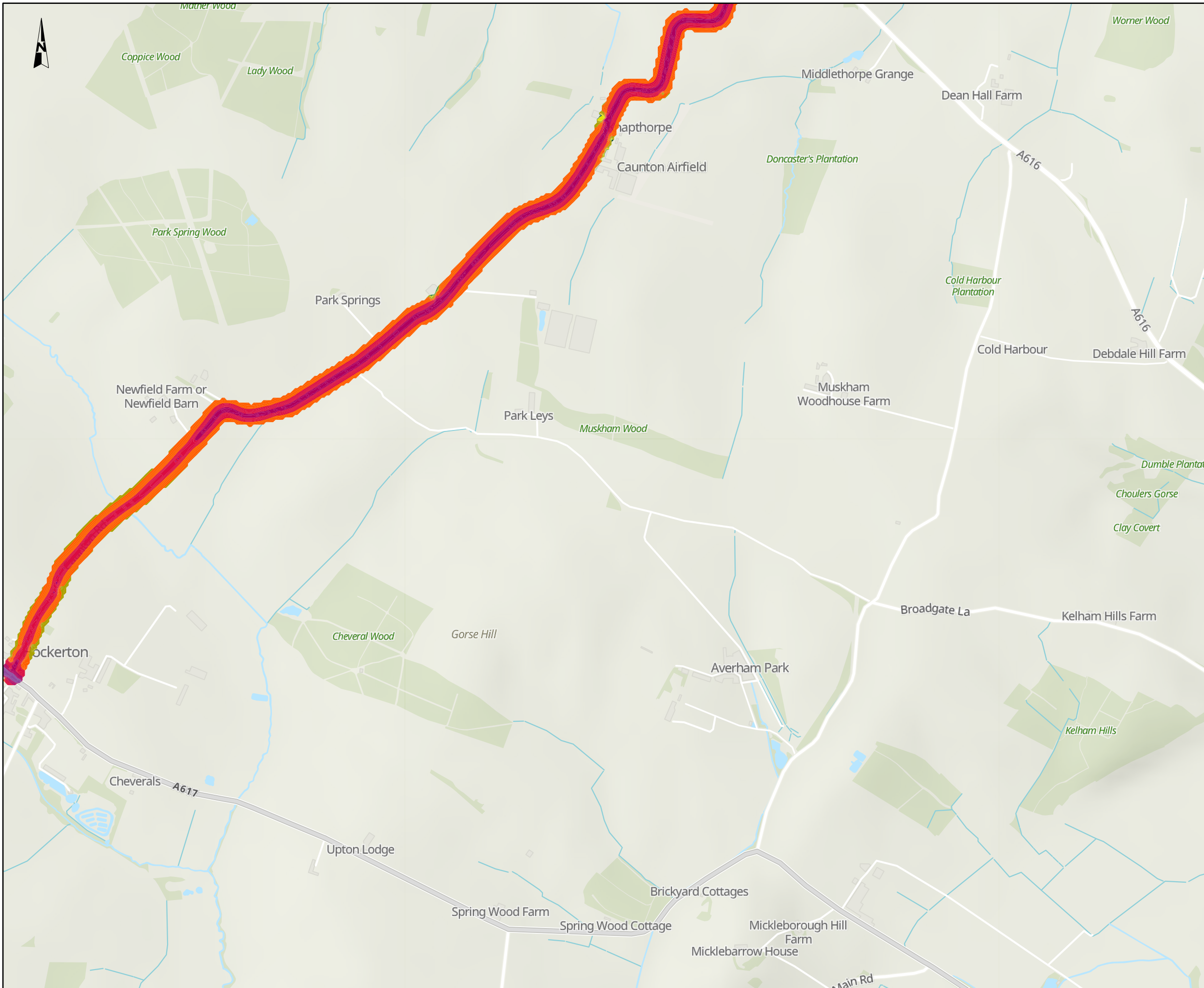
DRAWING TITLE
 Figure 11.5
 Noise levels in the Do Minimum Opening Year
 Sheet: 3 of 8

ORIGINAL SIZE	A3	SCALE	1:15,000
---------------	----	-------	----------

DRAWING NUMBER	ORIGINATOR	VOLUME	PROJECT REF NO.
HE551478	SKAG	ENV	HE551478
LOCATION	TYPE	ROLE	REVISION
CONWI_CONW	DR	LA	C01
		00014	

© Skanska
 This document is issued for the party which commissioned it and for specific purposes connected with the captioned project only. It should not be relied upon by any other party or used for any other purpose.
 We accept no responsibility for the consequences of this document being relied upon by any other party, or being used for any other purpose, or containing any error or omission which is due to an error or omission in data supplied to us by other parties.



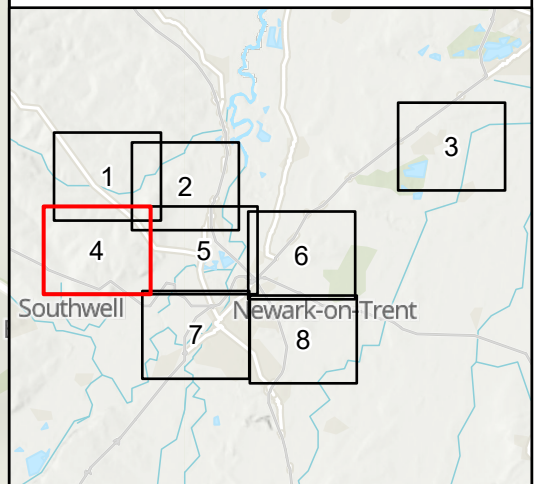


NOTES
 Source
 Noise data designed by Mott MacDonald, 2023.
 Service Layer Credits
 Contains OS data © Crown Copyright and database right 2020
 Contains data from OS Zoomstack, Contains OS data © Crown Copyright and database right 2023
 Contains data from OS Zoomstack

KEY TO SYMBOLS

Noise levels $L=L_{A10,18h}$ (dB) - Do Minimum Opening Year

- $L < 35$
- $35 \leq L < 40$
- $40 \leq L < 45$
- $45 \leq L < 50$
- $50 \leq L < 55$
- $55 \leq L < 60$
- $60 \leq L < 65$
- $65 \leq L < 70$
- $70 \leq L < 75$
- $75 \leq L < 80$
- $L \geq 80$



C01	08/12/23	DCO APPLICATION	BH	SD	HF
REV.	DATE	AMENDMENT DETAILS	ORIG	CHK'D	APP'D

CLIENT

PURPOSE OF ISSUE
 DCO APPLICATION

DEVELOPMENT CONSENT ORDER NUMBER
 TR010065

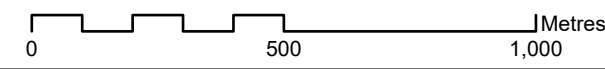
PROJECT TITLE
 A46 NEWARK BYPASS

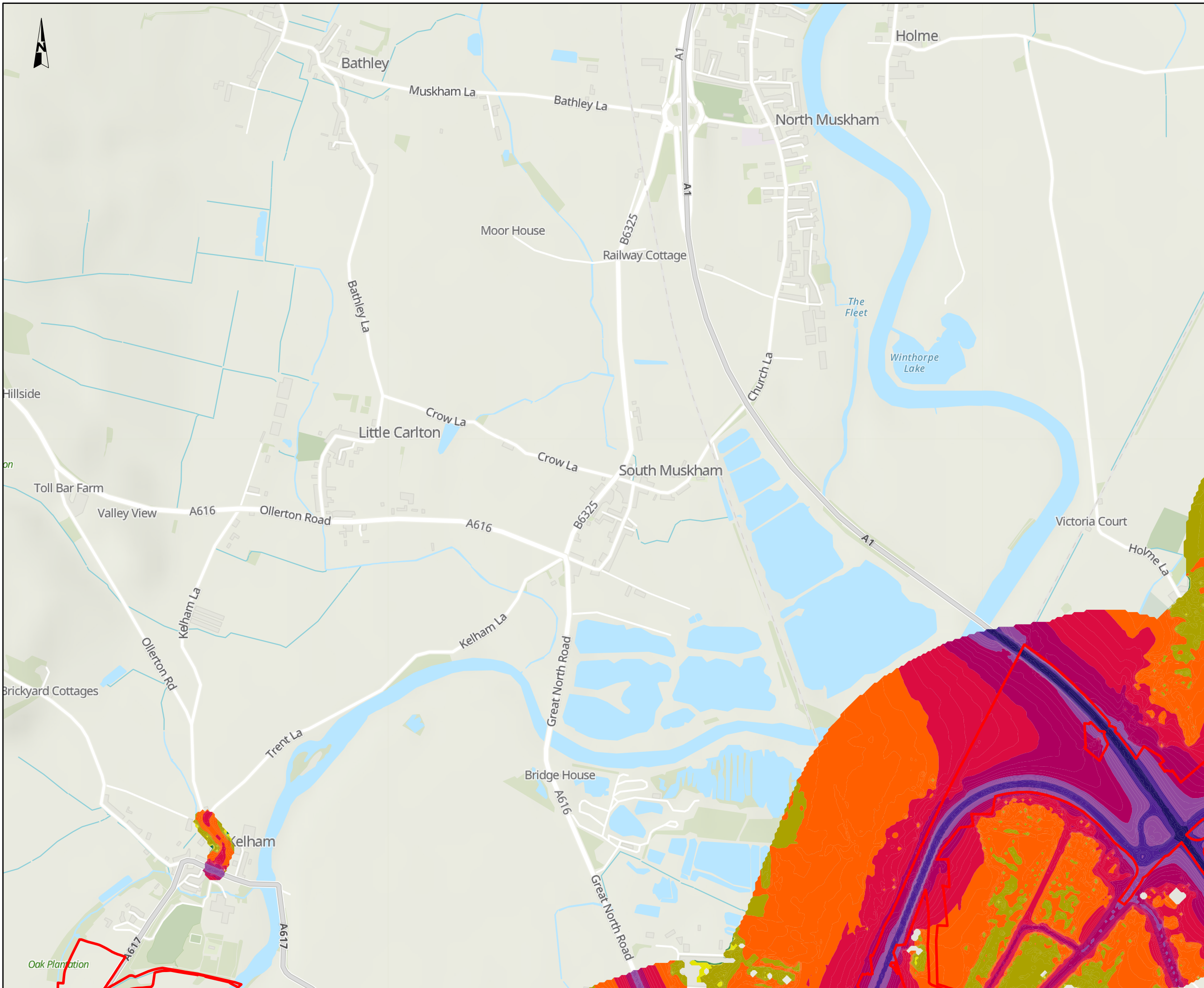
DRAWING TITLE
 Figure 11.5
 Noise levels in the Do Minimum Opening Year
 Sheet: 4 of 8

ORIGINAL SIZE A3 SCALE 1:15,000

DRAWING NUMBER HE551478	ORIGINATOR SKAG	VOLUME ENV	PROJECT REF NO. HE551478
LOCATION CONWI_CONW	TYPE DR	ROLE LA	REVISION C01
	NUMBER 00015		

© Skanska
 This document is issued for the party which commissioned it and for specific purposes connected with the captioned project only. It should not be relied upon by any other party or used for any other purpose.
 We accept no responsibility for the consequences of this document being relied upon by any other party, or being used for any other purpose, or containing any error or omission which is due to an error or omission in data supplied to us by other parties.





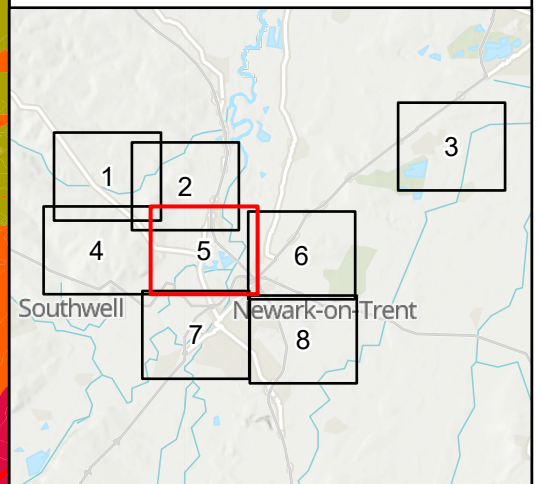
NOTES
 Source
 Noise data designed by Mott MacDonald, 2023.
 Service Layer Credits
 Contains OS data © Crown Copyright and database right 2020
 Contains data from OS Zoomstack, Contains OS data © Crown Copyright and database right 2023
 Contains data from OS Zoomstack

KEY TO SYMBOLS

Order Limits

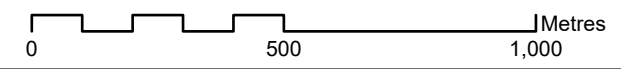
Noise levels $L=L_{A10,18h}$ (dB) - Do Minimum Opening Year

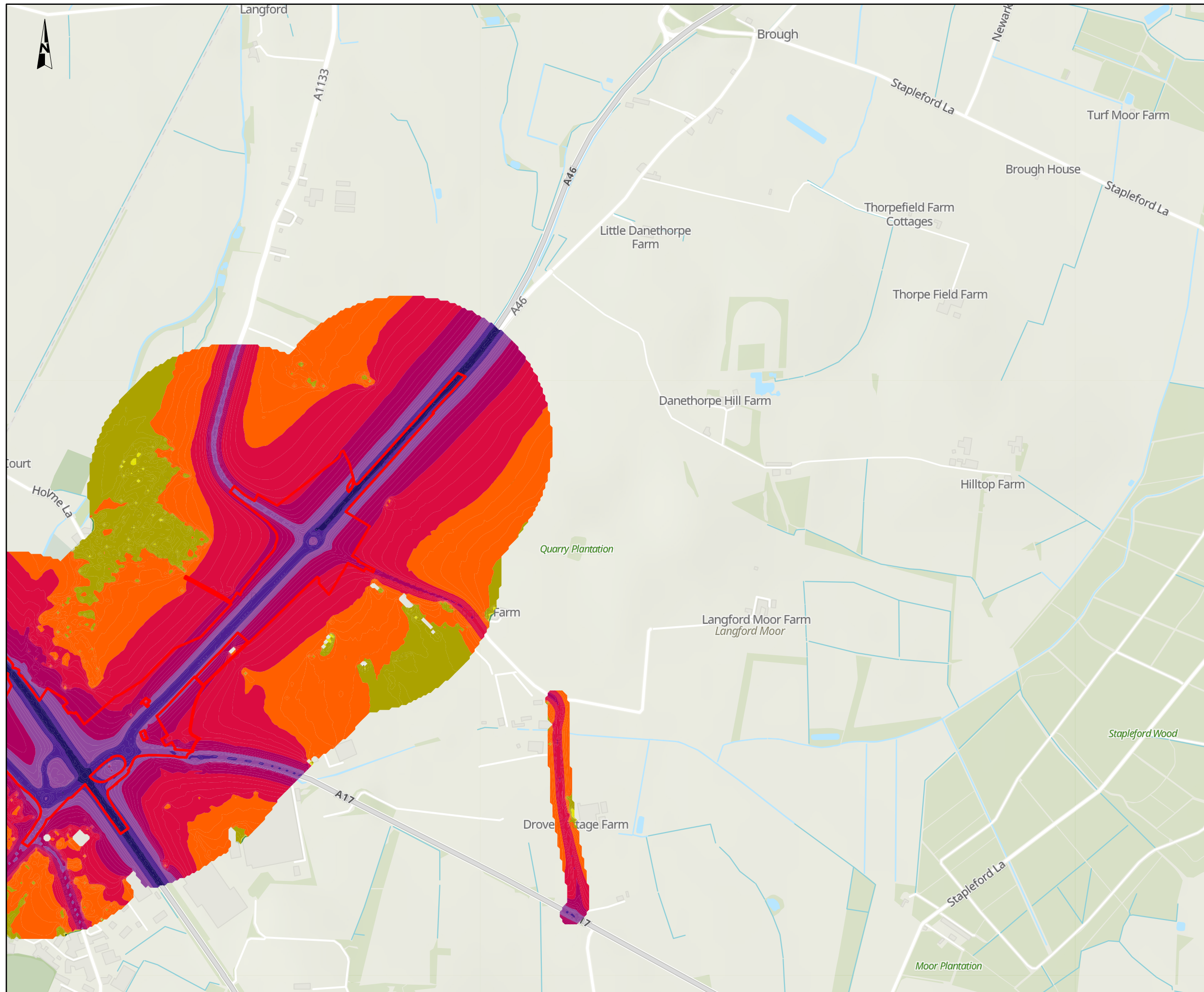
- $L < 35$
- $35 \leq L < 40$
- $40 \leq L < 45$
- $45 \leq L < 50$
- $50 \leq L < 55$
- $55 \leq L < 60$
- $60 \leq L < 65$
- $65 \leq L < 70$
- $70 \leq L < 75$
- $75 \leq L < 80$
- $L \geq 80$



C01	08/12/23	DCO APPLICATION	BH	SD	HF
REV.	DATE	AMENDMENT DETAILS	ORIG	CHK'D	APP'D
CLIENT					
PURPOSE OF ISSUE					
DCO APPLICATION					
DEVELOPMENT CONSENT ORDER NUMBER					
TR010065					
PROJECT TITLE					
A46 NEWARK BYPASS					
DRAWING TITLE					
Figure 11.5 Noise levels in the Do Minimum Opening Year Sheet: 5 of 8					
ORIGINAL SIZE		SCALE			
A3		1:15,000			
DRAWING NUMBER		ORIGINATOR	VOLUME	PROJECT REF NO.	
HE551478		SKAG	ENV	HE551478	
LOCATION		DR	LA	00016	REVISION
CONWI_CONW		DR	LA	00016	C01

© Skanska
 This document is issued for the party which commissioned it and for specific purposes connected with the captioned project only. It should not be relied upon by any other party or used for any other purpose.
 We accept no responsibility for the consequences of this document being relied upon by any other party, or being used for any other purpose, or containing any error or omission which is due to an error or omission in data supplied to us by other parties.





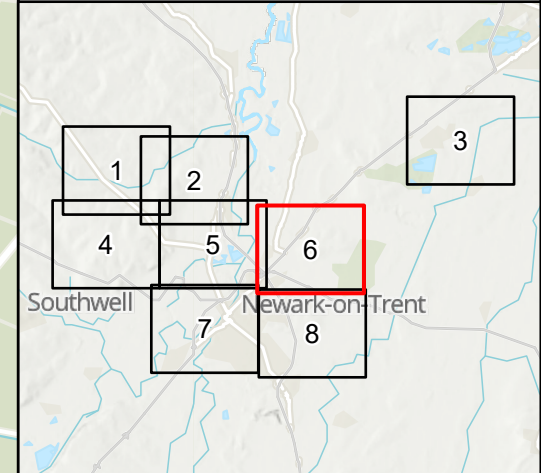
NOTES
 Source
 Noise data designed by Mott MacDonald, 2023.
 Service Layer Credits
 Contains OS data © Crown Copyright and database right 2020
 Contains data from OS Zoomstack, Contains OS data © Crown Copyright and database right 2023
 Contains data from OS Zoomstack

KEY TO SYMBOLS

Order Limits

Noise levels $L=L_{A10,18h}$ (dB) - Do Minimum Opening Year

- $L < 35$
- $35 \leq L < 40$
- $40 \leq L < 45$
- $45 \leq L < 50$
- $50 \leq L < 55$
- $55 \leq L < 60$
- $60 \leq L < 65$
- $65 \leq L < 70$
- $70 \leq L < 75$
- $75 \leq L < 80$
- $L \geq 80$



C01	08/12/23	DCO APPLICATION	BH	SD	HF
REV.	DATE	AMENDMENT DETAILS	ORIG	CHK'D	APP'D

CLIENT

PURPOSE OF ISSUE
 DCO APPLICATION

DEVELOPMENT CONSENT ORDER NUMBER
 TR010065

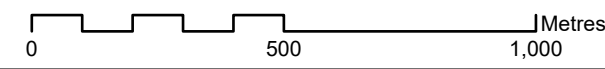
PROJECT TITLE
 A46 NEWARK BYPASS

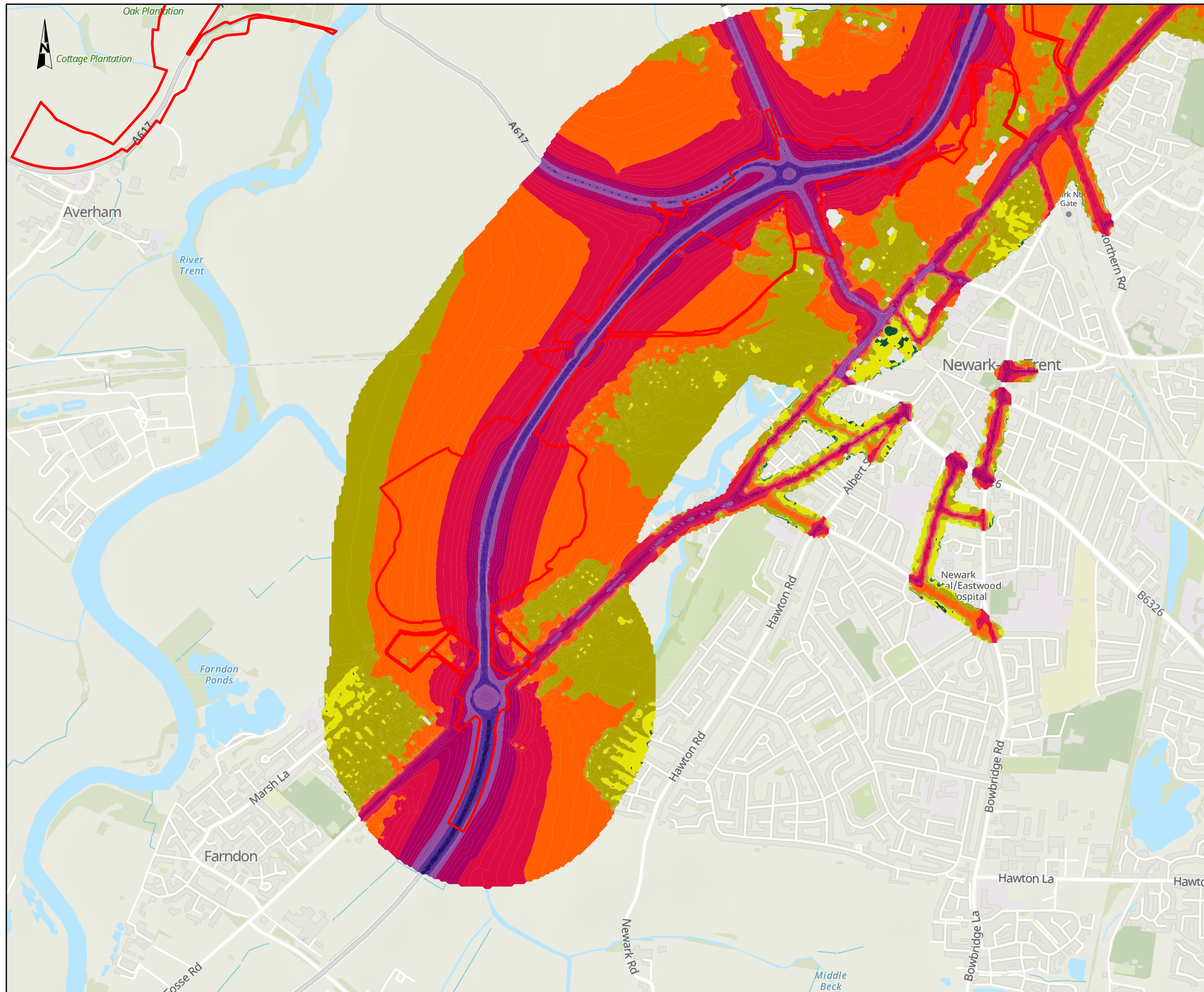
DRAWING TITLE
 Figure 11.5
 Noise levels in the Do Minimum Opening Year
 Sheet: 6 of 8

ORIGINAL SIZE A3 SCALE 1:15,000

DRAWING NUMBER HE551478	ORIGINATOR SKAG	VOLUME ENV	PROJECT REF NO. HE551478
LOCATION CONWI_CONW	TYPE DR	ROLE LA	REVISION C01
	NUMBER 00017		

© Skanska
 This document is issued for the party which commissioned it and for specific purposes connected with the captioned project only. It should not be relied upon by any other party or used for any other purpose.
 We accept no responsibility for the consequences of this document being relied upon by any other party, or being used for any other purpose, or containing any error or omission which is due to an error or omission in data supplied to us by other parties.





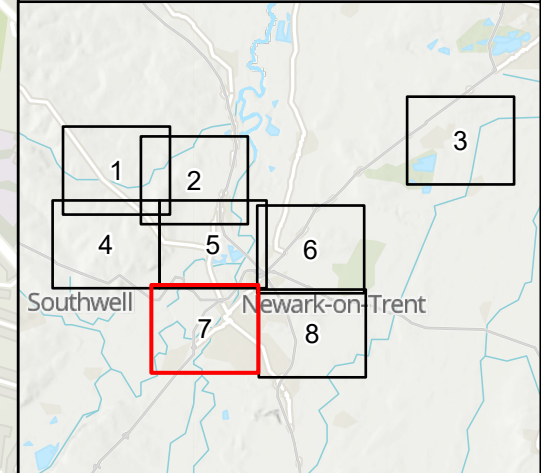
NOTES
 Source
 Noise data designed by Mott MacDonald, 2023.
 Service Layer Credits
 Contains OS data © Crown Copyright and database right 2020
 Contains data from OS Zoomstack, Contains OS data © Crown Copyright and database right 2023
 Contains data from OS Zoomstack

KEY TO SYMBOLS

Order Limits

Noise levels $L=L_{A10,18h}$ (dB) - Do Minimum Opening Year

- $L < 35$
- $35 \leq L < 40$
- $40 \leq L < 45$
- $45 \leq L < 50$
- $50 \leq L < 55$
- $55 \leq L < 60$
- $60 \leq L < 65$
- $65 \leq L < 70$
- $70 \leq L < 75$
- $75 \leq L < 80$
- $L \geq 80$



C01	08/12/23	DCO APPLICATION	BH	SD	HF
REV.	DATE	AMENDMENT DETAILS	ORIG	CHK'D	APP'D

CLIENT

PURPOSE OF ISSUE
 DCO APPLICATION

DEVELOPMENT CONSENT ORDER NUMBER
 TR010065

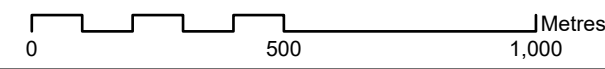
PROJECT TITLE
 A46 NEWARK BYPASS

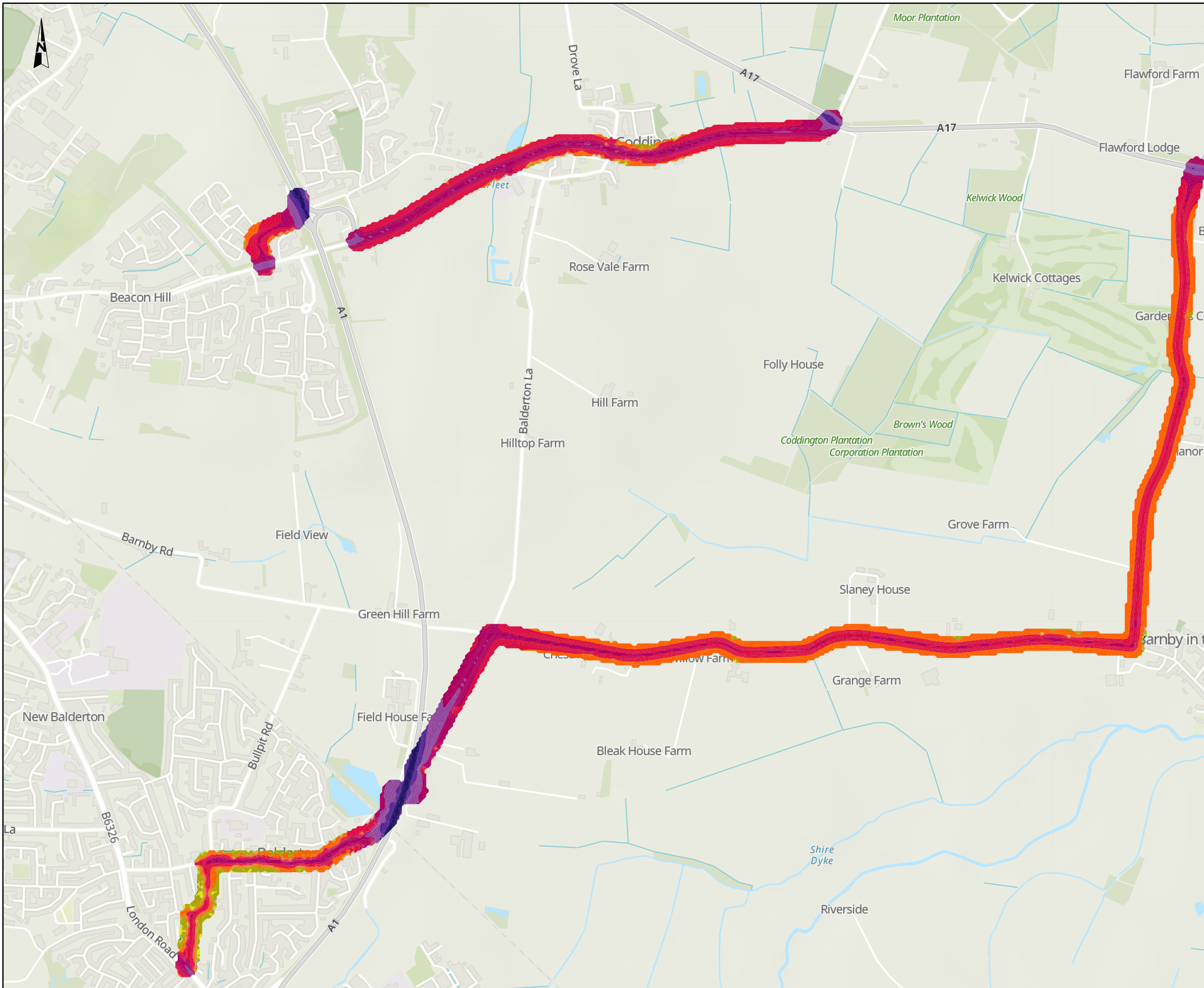
DRAWING TITLE
 Figure 11.5
 Noise levels in the Do Minimum Opening Year
 Sheet: 7 of 8

ORIGINAL SIZE	A3	SCALE	1:15,000
---------------	----	-------	----------

DRAWING NUMBER	ORIGINATOR	VOLUME	PROJECT REF NO.
HE551478	SKAG	ENV	HE551478
CONWI_CONW	DR	LA	REVISION
LOCATION	TYPE	ROLE	NUMBER
			C01

© Skanska
 This document is issued for the party which commissioned it and for specific purposes connected with the captioned project only. It should not be relied upon by any other party or used for any other purpose.
 We accept no responsibility for the consequences of this document being relied upon by any other party, or being used for any other purpose, or containing any error or omission which is due to an error or omission in data supplied to us by other parties.



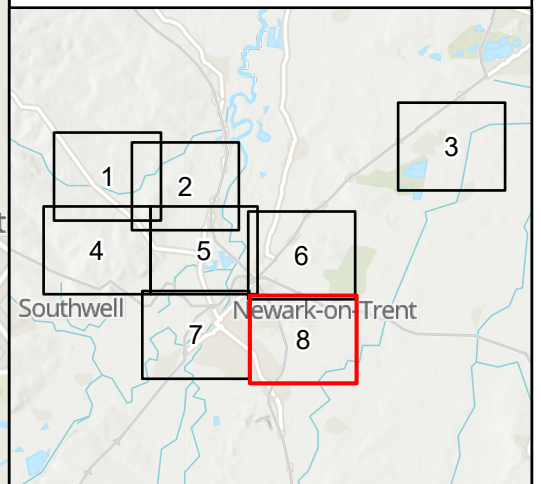


NOTES
 Source
 Noise data designed by Mott MacDonald, 2023.
 Service Layer Credits
 Contains OS data © Crown Copyright and database right 2020
 Contains data from OS Zoomstack, Contains OS data © Crown Copyright and database right 2023
 Contains data from OS Zoomstack

KEY TO SYMBOLS

Noise levels $L=L_{A10,18h}$ (dB) - Do Minimum Opening Year

- $L < 35$
- $35 \leq L < 40$
- $40 \leq L < 45$
- $45 \leq L < 50$
- $50 \leq L < 55$
- $55 \leq L < 60$
- $60 \leq L < 65$
- $65 \leq L < 70$
- $70 \leq L < 75$
- $75 \leq L < 80$
- $L \geq 80$



C01	08/12/23	DCO APPLICATION	BH	SD	HF
REV.	DATE	AMENDMENT DETAILS	ORIG	CHK'D	APP'D

CLIENT

PURPOSE OF ISSUE
 DCO APPLICATION

DEVELOPMENT CONSENT ORDER NUMBER
 TR010065

PROJECT TITLE
 A46 NEWARK BYPASS

DRAWING TITLE
 Figure 11.5
 Noise levels in the Do Minimum Opening Year
 Sheet: 8 of 8

ORIGINAL SIZE A3 SCALE 1:15,000

DRAWING NUMBER HE551478	ORIGINATOR SKAG	VOLUME ENV	PROJECT REF NO. HE551478
LOCATION CONWI_CONW	TYPE DR	ROLE LA	REVISION C01
	NUMBER 00019		

© Skanska
 This document is issued for the party which commissioned it and for specific purposes connected with the captioned project only. It should not be relied upon by any other party or used for any other purpose.
 We accept no responsibility for the consequences of this document being relied upon by any other party, or being used for any other purpose, or containing any error or omission which is due to an error or omission in data supplied to us by other parties.

